

GLA

Gemological Laboratory of America

International Jewelry Center Building
550 S. Hill Street, Suite 855
Los Angeles, CA 90013

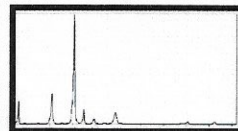
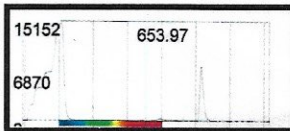
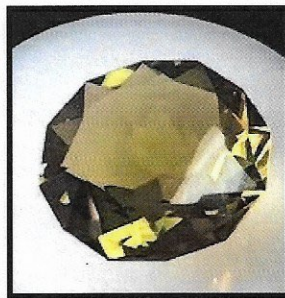
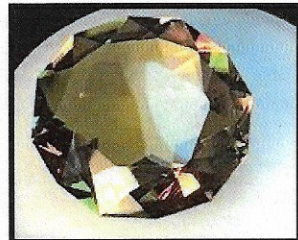
Date: 10/22/2018

PREMIERE PLUS Appraisal

102218-LC-AAB7-VGM

LOOSE GEMSTONE

Species/Variety	Natural Color Change Zultanite (Diaspore)
Quantity:	1
Carat Weight:	36.56 cts
Origin	Turkey Anatolian Mountains
Measurements	
Shape:	Modified Portuguese (Faceted)
Measurements:	24.64x23.94-22.88x8.97 mm
Finish	
Polish:	9 - Excellent
Finish:	7 - Very Good
Clarity/Color Factors	
Clarity Type:	II=may include eye-visible features
Hue:	Golden Green
Secondary:	Rosé
Transparency:	Transparent
Tone:	Medium
Saturation:	Vivid-Bright
Phenomena:	Color Change
Standard Test Results	
Refractive Index:	1.70-1.75
Specific Gravity:	3.40



Zultanite Mined In Only One Place On Earth (Turkey) Is An Extremely Rare Variety Of The Mineral Diaspore. This Mineral May Feature Color Changing/Color Shifting Phenomena Similar To Alexandrite Or Color Shift Sapphires.

Grading Results

	Fine + 10 +	Ex-Fine 10	Excellent 9	Ex-VG 8	Very Good 7	VG-Good 6	Good 5	Good-Fair 4	Fair 3	Fair-Comm 2	Comm 1
Overall Quality Grade											
Clarity Grade											
Color Grade											

Spectrometer Results

390-400 (Band)	390										
437-475 (Line)		437									
692 (Doublet)					692						

ESTIMATED RETAIL REPLACEMENT VALUE:

(USD) \$147,100.00

© COPYRIGHT 2003-2018 - All Rights Reserved

Christina Cruz, G.G.
Graduate Gemologist, G.I.A.

Instruments Utilized by GLA Gemologists:

GLA utilizes CRG-Certified Rare Gems Laboratory to perform Jewelry and Loose Gemstone Evaluations to derive Appraisal Values. Clients decide which appraisal value they deem necessary for their individual purposes during submission of projects i.e Wholesale, Fair Market, Retail, Retail Replacement Values within the City of Los Angeles, State of California marketplace. All or some of the preceding Gemological Instruments may have been utilized during the examination of the subject designated on this report: Binocular Microscope, Electronic & Digital Microscope, GIA Master Comparison Diamond Color Grading Set, Electronic Carat Weight Balancing Scale, Synthetic & CVD-HPHT Diamond Detection Device, Sarin Technologies & OGI Megascop 3-Channel Non-Contact Diamond Proportion Measuring Device, Challenger Spectrometer, GL Gem Spectrometer, GL Gem Raman Spectrometer, GL Gem VIS-NIR-400-950nm, MDM Spectrometer etc. GIA Mfil Instruments: Portable Complete Gem Lab, GIA LW & SW Ultraviolet Light Mechanism, GIA Refractometer, GIA Polariscop, GIA Fiber Optic Illumination, GIA Diamond Color Grader, GIA Specific Gravity Liquid Set, Electronic Gold & Platinum Testing Instrument.

Security Measures Utilized by GLA For This Official Document: Holographic Seal, Tamper-proof Background Design, Customized GLA Logo Embossing, and an Exclusive Lamination Treatment.

Terms & Conditions on Reverse